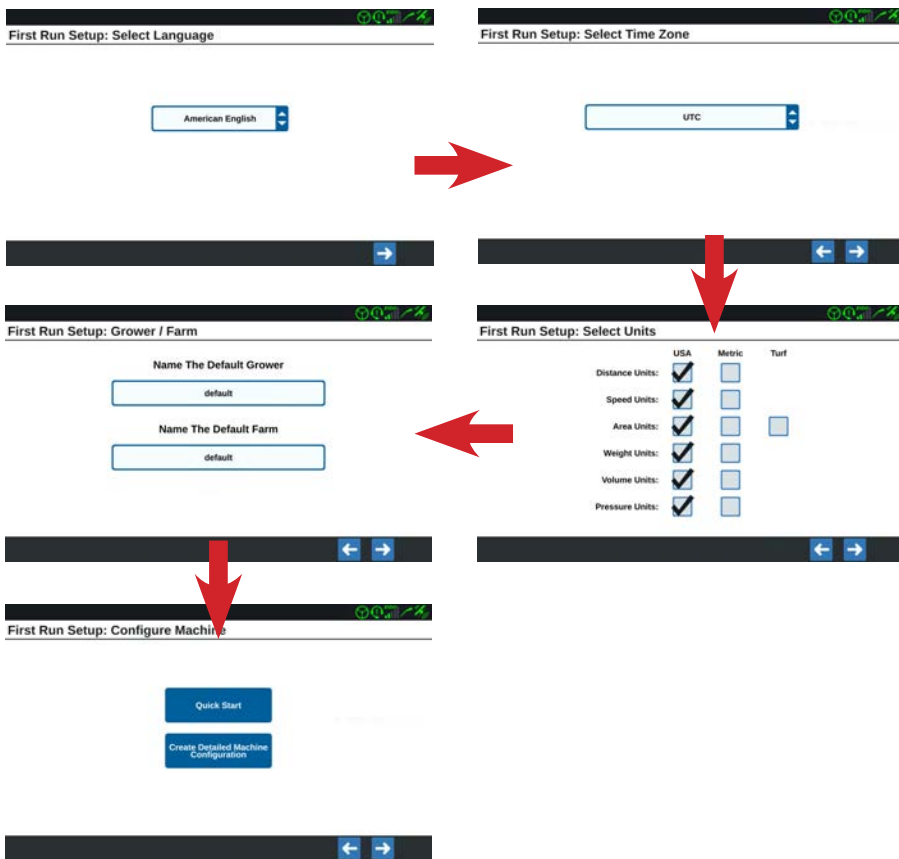
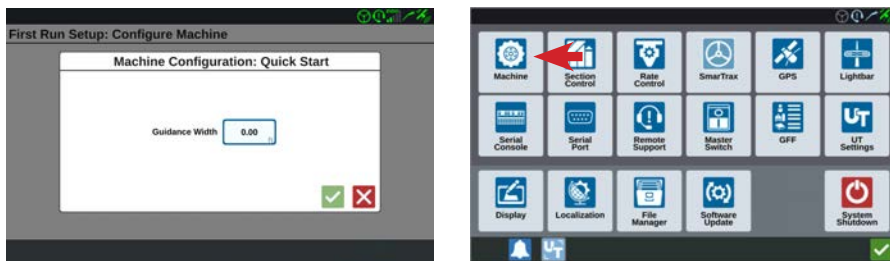


## FIRST RUN (BRAND NEW)



## QUICK START (BRAND NEW)

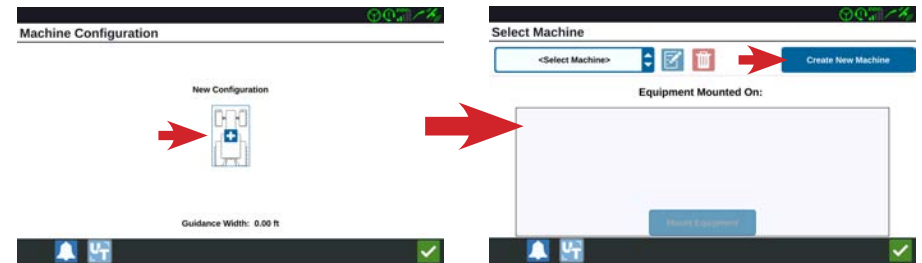
The **Quick Start** button will finish your machine set up with the *Guidance Width*. You can name your machine configuration and add the other machine measurements at a later time through *Machine Setup* in the *Settings* page.



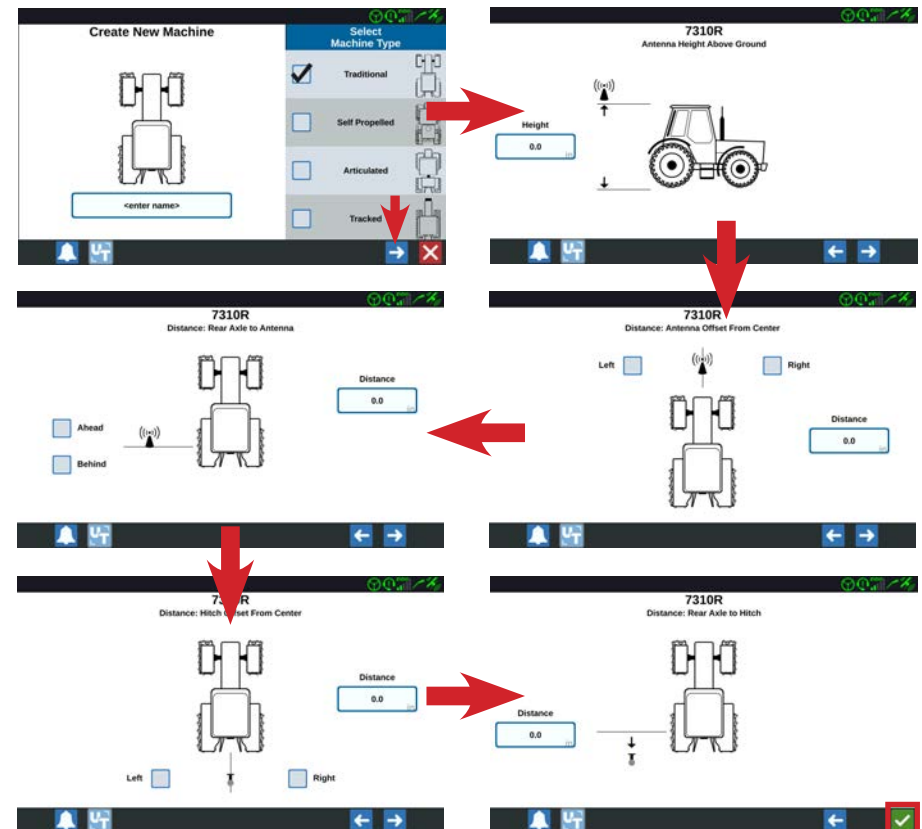
## CR7™ MACHINE SETUP

## CREATE DETAILED MACHINE CONFIGURATION

You can enter detailed measurements for your tractor or sprayer at first run or later when you want to add to or change your machine measurements/configuration. The *CR7™ Measurement Checklist* will assist you with the needed measurements for the rest of the machine configuration set up. Select the **New Configuration** button and then the **Create New Machine** button.



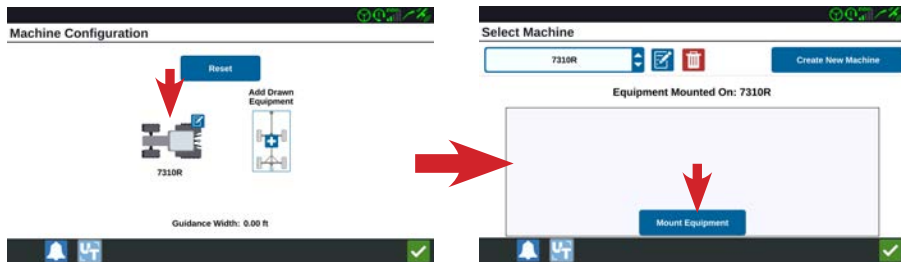
Select **Machine Type** and enter your machine name. Select the **Next** button and continue entering your machine measurements.



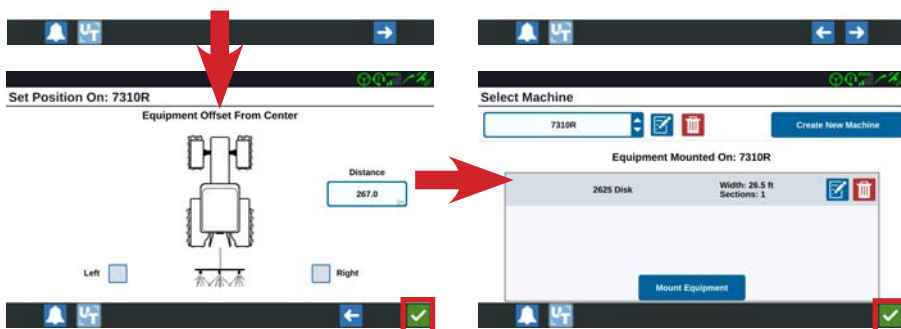
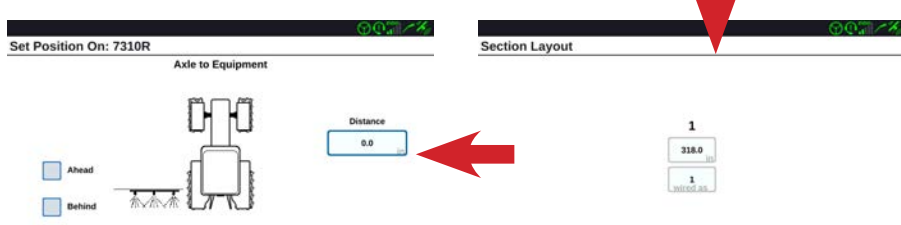
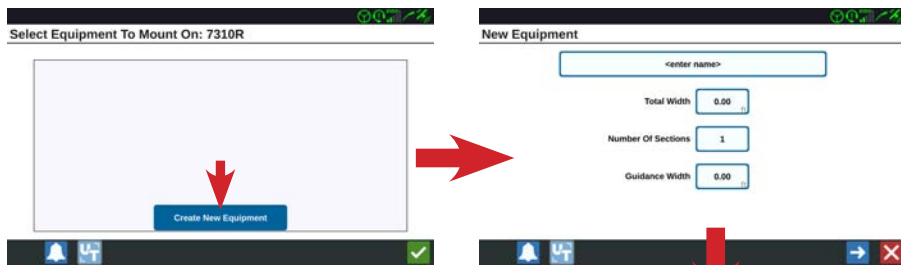
Conventional Tractor example

## MOUNT EQUIPMENT (SPRAYERS/TRACTORS)

You will need to add/mount any equipment attached to your machine. Some examples would be the spray boom (Sprayers), any equipment attached to the three-point hitch (Tractors), or any Raven serial consoles (Sprayers or Tractors). Select the machine **Edit** button and then the **Mount Equipment** button.

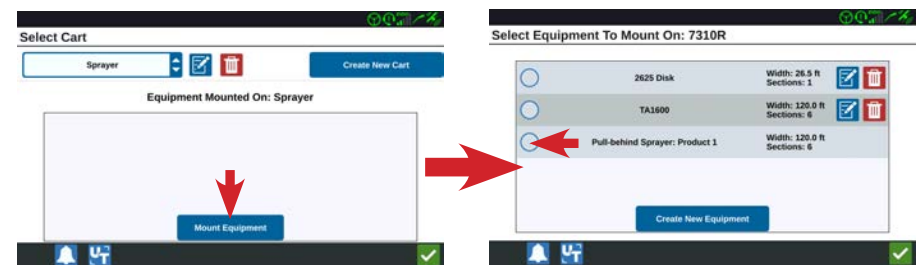
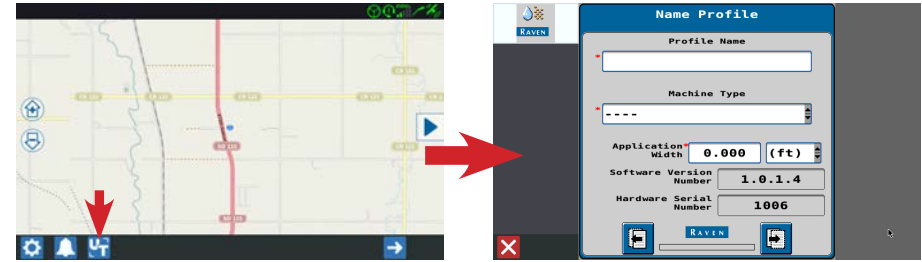


The CR7™ Measurement Checklist will assist you with the needed measurements for your equipment. Select the **Create New Equipment** button and then continue with the equipment set up. (Conventional Tractor example)



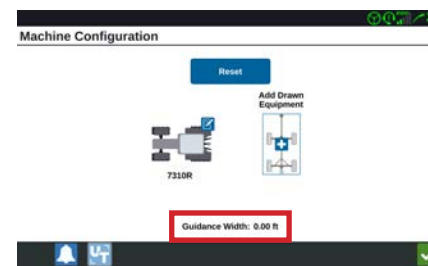
## MOUNT ISO EQUIPMENT

If you have the Raven Rate Control Module (RCM) or Hawkeye® system, you will need to set up your ISO equipment within the UT (Universal Terminal) area first. Once set up is complete, your ISO equipment will be automatically available in your implement library.

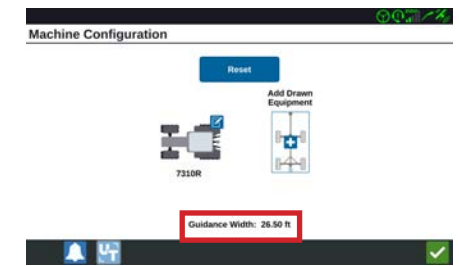


## CHANGE MOUNTED EQUIPMENT (TRACTORS)

You can verify if you have mounted equipment by checking your machine configuration's *Guidance Width*.



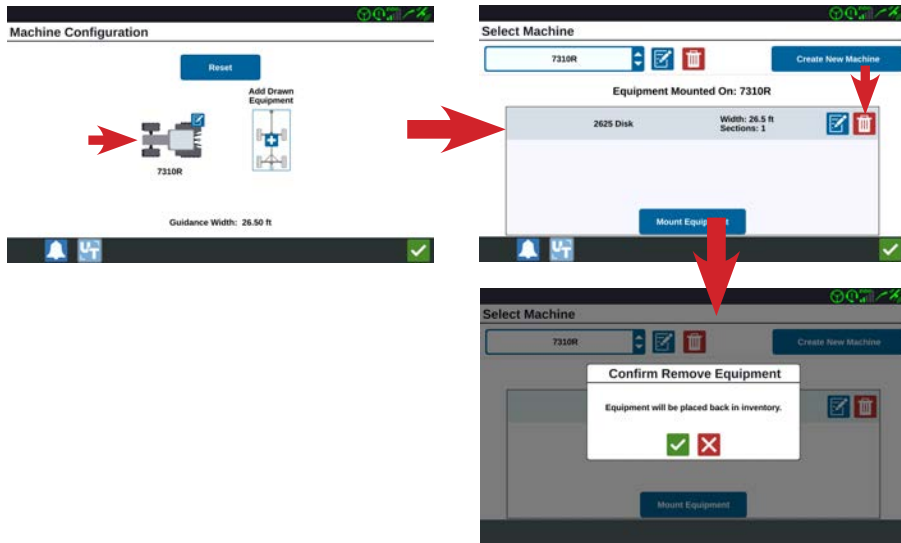
no mounted equipment



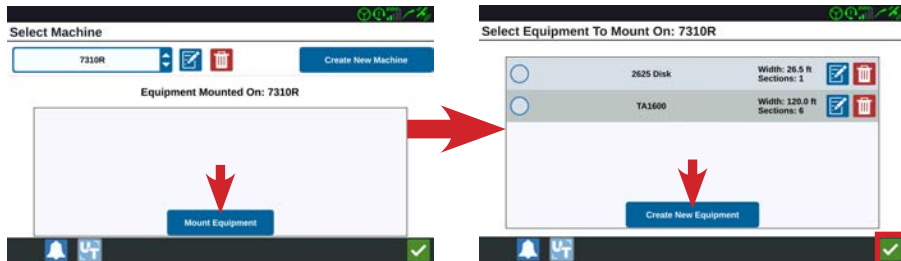
mounted equipment attached

## CHANGE MOUNTED EQUIPMENT CONTINUED

To change your mounted equipment, select the machine **Edit** button and then the **Delete** button to place it back into inventory.

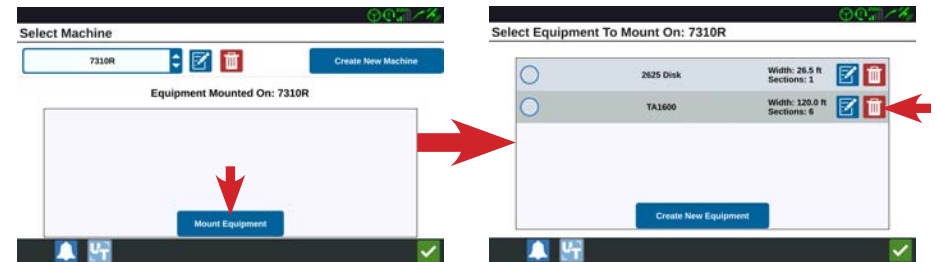


Select the **Mount Equipment** button and choose the equipment you want to mount to your machine or select the **Create New Equipment** button to add one.



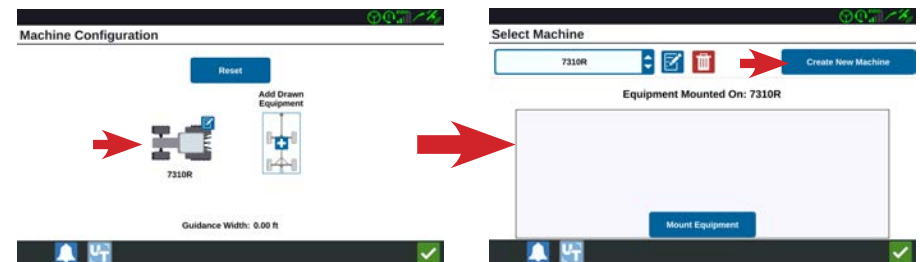
## DELETE MOUNTED EQUIPMENT FROM INVENTORY

If you no longer have a piece of equipment, you can delete it from your inventory. First, delete/unmount the equipment to place it back in inventory and then select the **Mount Equipment** button. Next, select the **Delete** button of the equipment you want to permanently remove.



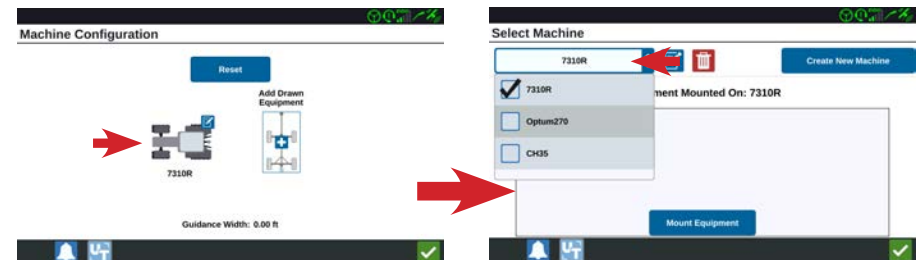
## CREATE NEW MACHINE (MOVE YOUR CR7™)

You can save the different machines you move your CR7™ to and interchange mounted equipment between them. After moving your CR7™, select the machine **Edit** button and then the **Create New Machine** button. You can continue to set up your other machine as outlined in the *Create Detailed Machine Configuration* section of this guide.



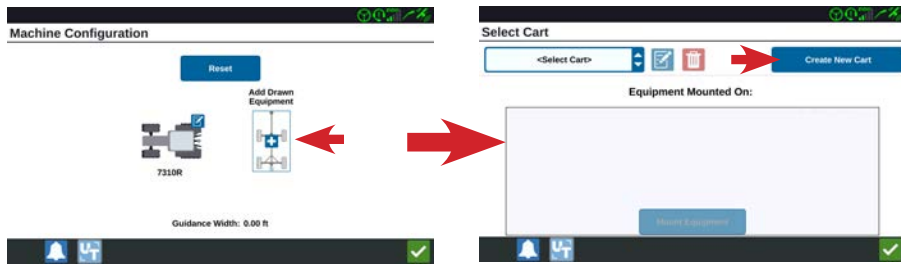
## CHANGE MACHINE CONFIGURATION

To change the machine you are moving your CR7™ between, select the machine **Edit** button and then select the correct machine configuration from your machine list. You can then choose your equipment to mount to this machine.

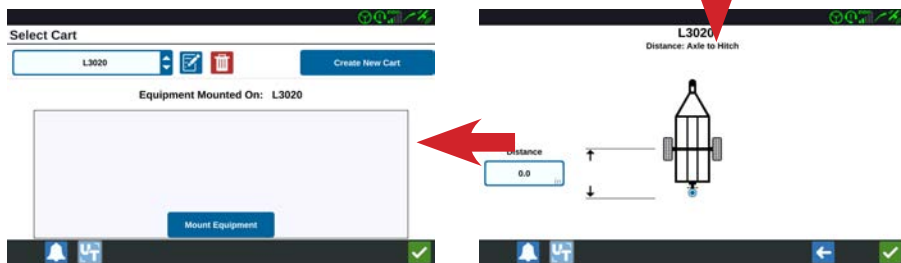
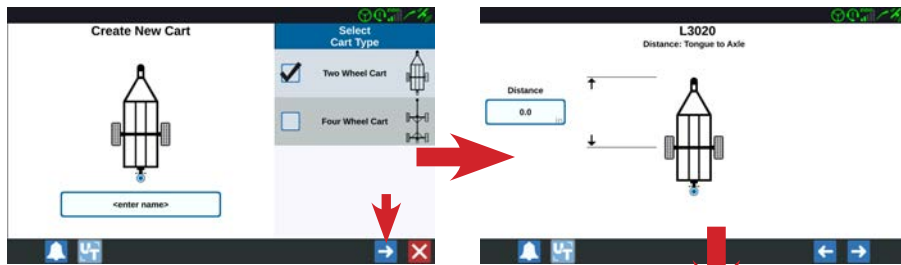


## DRAWN EQUIPMENT SETUP (TRACTORS)

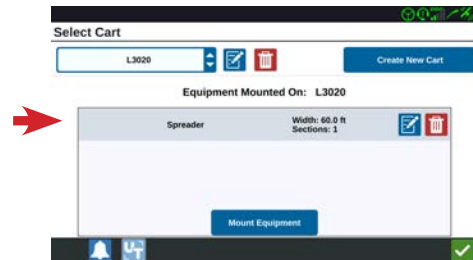
If you have drawn equipment, you will need to add it to your machine configuration. Select the **Add Drawn Equipment** button and then the **Create New Cart** button.



Select either *Two Wheel Cart* or *Four Wheel Cart* and then name your cart. Select the **Next** button and then continue with setting up your drawn equipment. The *CR7™ Measurement Checklist* will assist you with the needed measurements for your cart.



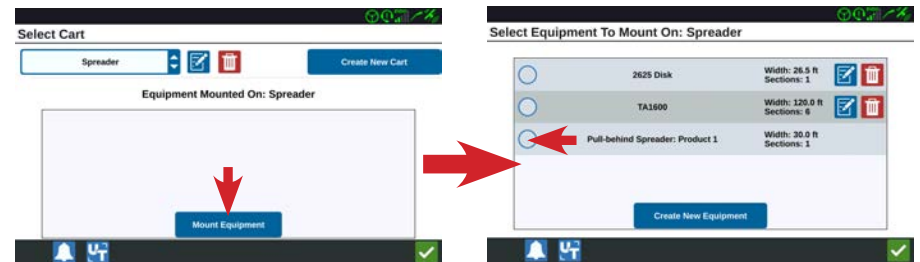
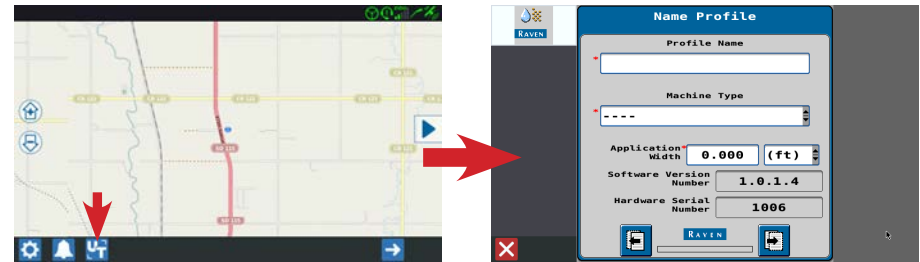
After configuring your cart, you will need to mount the equipment on it. The procedure for mounting cart equipment is the same as for your machine. See the *Mount Equipment (Sprayers/Tractors)* section of this guide for additional information.



*Two Wheel Cart example*

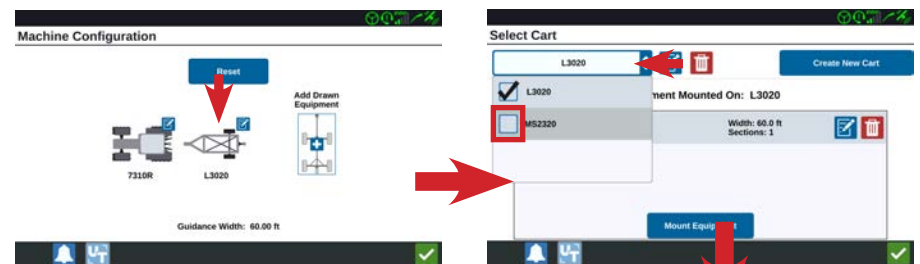
## DRAWN ISO EQUIPMENT

If you have the Raven Rate Control Module (RCM) or Hawkeye® system and it is mounted to a drawn cart, you will need to set up your ISO equipment within the UT (Universal Terminal) area first. Once set up is complete, your ISO equipment will be automatically available in your implement library.

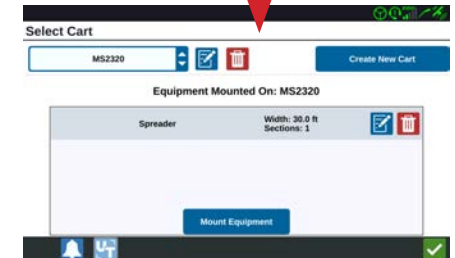


## CHANGE DRAWN EQUIPMENT (TRACTORS)

To change your drawn equipment, select the cart **Edit** button and then the cart drop-down list to choose your different cart.

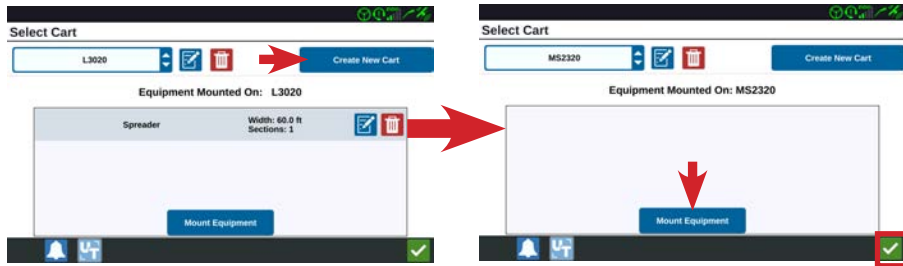


Process continued on next page.



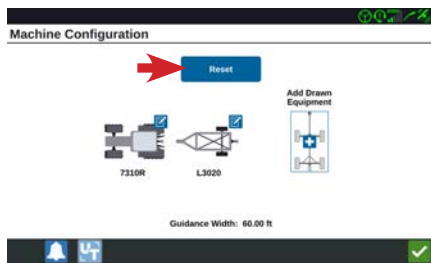
## CHANGE DRAWN EQUIPMENT CONTINUED

If you haven't added your cart yet, select the **Create New Cart** button to configure it. When finished, remember to mount your equipment to this new cart.

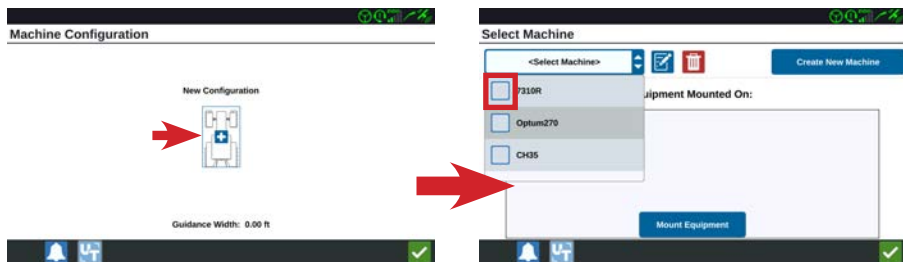


## DELETE ALL DRAWN EQUIPMENT OR LAST ONE

If you would like remove all your drawn equipment or need to remove the last drawn equipment from your library, you can select the **Reset** button.

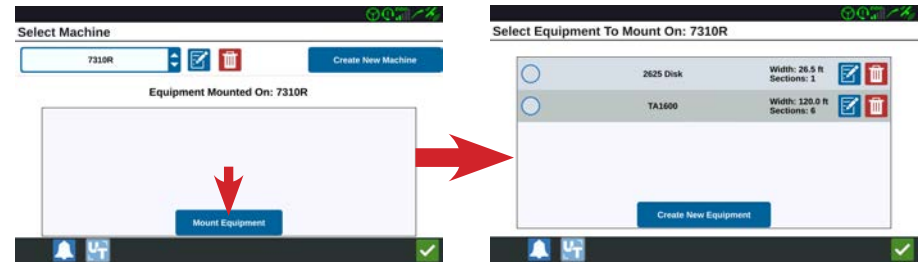


After reset, you will need to reload your machine configuration. Select the **New Configuration** button and then select your machine from your machine drop-down list.



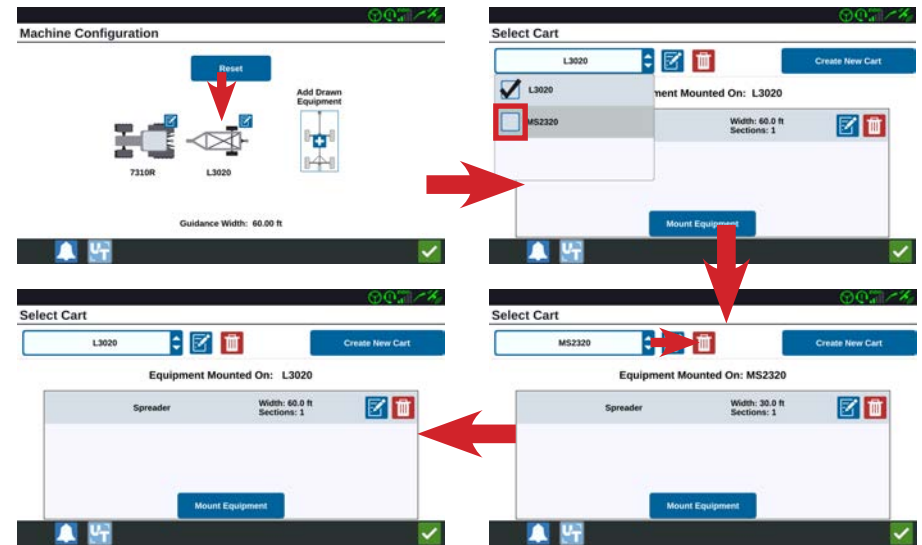
## DELETE ALL DRAWN EQUIPMENT OR LAST ONE CONTINUED

You can now add any of your mounted equipment if needed as your *Mounted Equipment* library is still available.



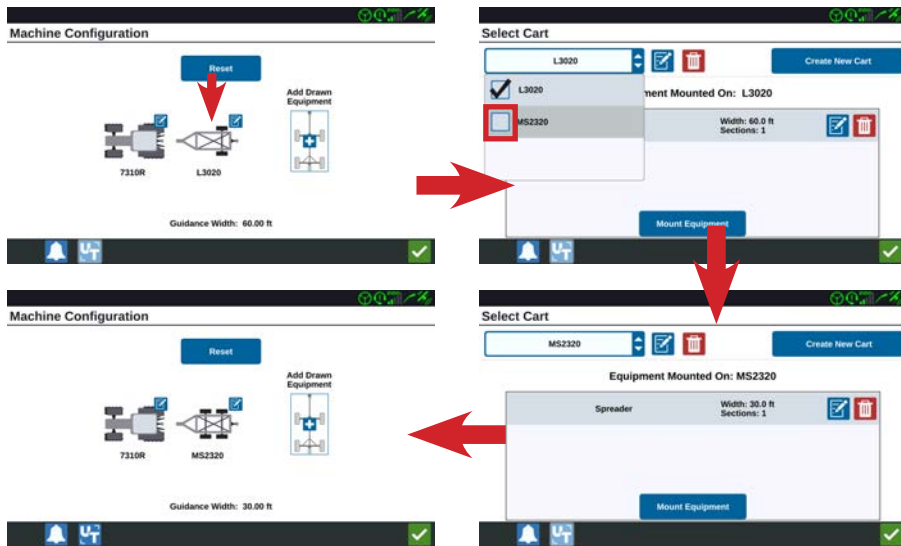
## DELETE A DRAWN EQUIPMENT NOT ATTACHED

If you no longer have a certain drawn equipment, select the cart **Edit** button. Select the cart you want to remove from the cart drop-down list and then the **Delete** button.



## DELETE A DRAWN EQUIPMENT CURRENTLY ATTACHED

If you will no longer be using a certain drawn equipment that is currently attached to your machine, you will need to select a different cart before you are allowed to delete it. Select the cart **Edit** button. Select a different cart than the one that is currently selected from the cart drop-down list. Select the **Okay** button to attach the other cart to your machine. *(Deleting the L3020 cart shown)*



Select the cart **Edit** button again and proceed with the steps outlined in the *Delete A Drawn Equipment Not Attached* section of this guide.

